



**O'SHEA**  
PLANT HIRE

**ALSHOR PLUS**

# CONTENTS

	PAGE No:
<b>INTRODUCTION</b> The advantages of using the system.	1
<b>IN PRACTICE</b> An example of Alshor Plus falsework once erected.	2
<b>TYPICAL DESIGN</b> An example of a falsework design.	3
<b>MAIN COMPONENTS</b> Legs Short Jacks Long Jacks Bracing Frames Base Plate U-Heads	4
<b>ACCESSORIES</b> Ratchet Lashing Jack Spanner Spigot Straight Pin Pocket Coupler M12 Unifix Nut & Bolt	5
<b>ACCESS EQUIPMENT</b> Access Platforms Board Bearer Ladder System Handrails	6
<b>HANDLING EQUIPMENT</b> Trolley Unit Castor Units	7

# INTRODUCTION

Alshor Plus is the next generation of proven aluminium falsework providing a leg load of up to 120kN. This new high performance system features high yield aluminium, with increased safety features, improved on-site versatility and greater cost effectiveness.

It's the result of over 50 years experience gained on major projects combined with communication between engineers and client feedback.

Some of the key points of the Alshor Plus system can be seen on the adjacent page

Detail:

A + B – Primary beams can be 'butted'(A) or 'lapped'(B). Lapping of the primary beams allows greater flexibility for varying site conditions.

C – Gates/frames are available in a variety of sizes, which provide greater design flexibility. Extended and stepped lower blades – enable the bottom of the frame to be located first followed by the top thus speeding assembly.

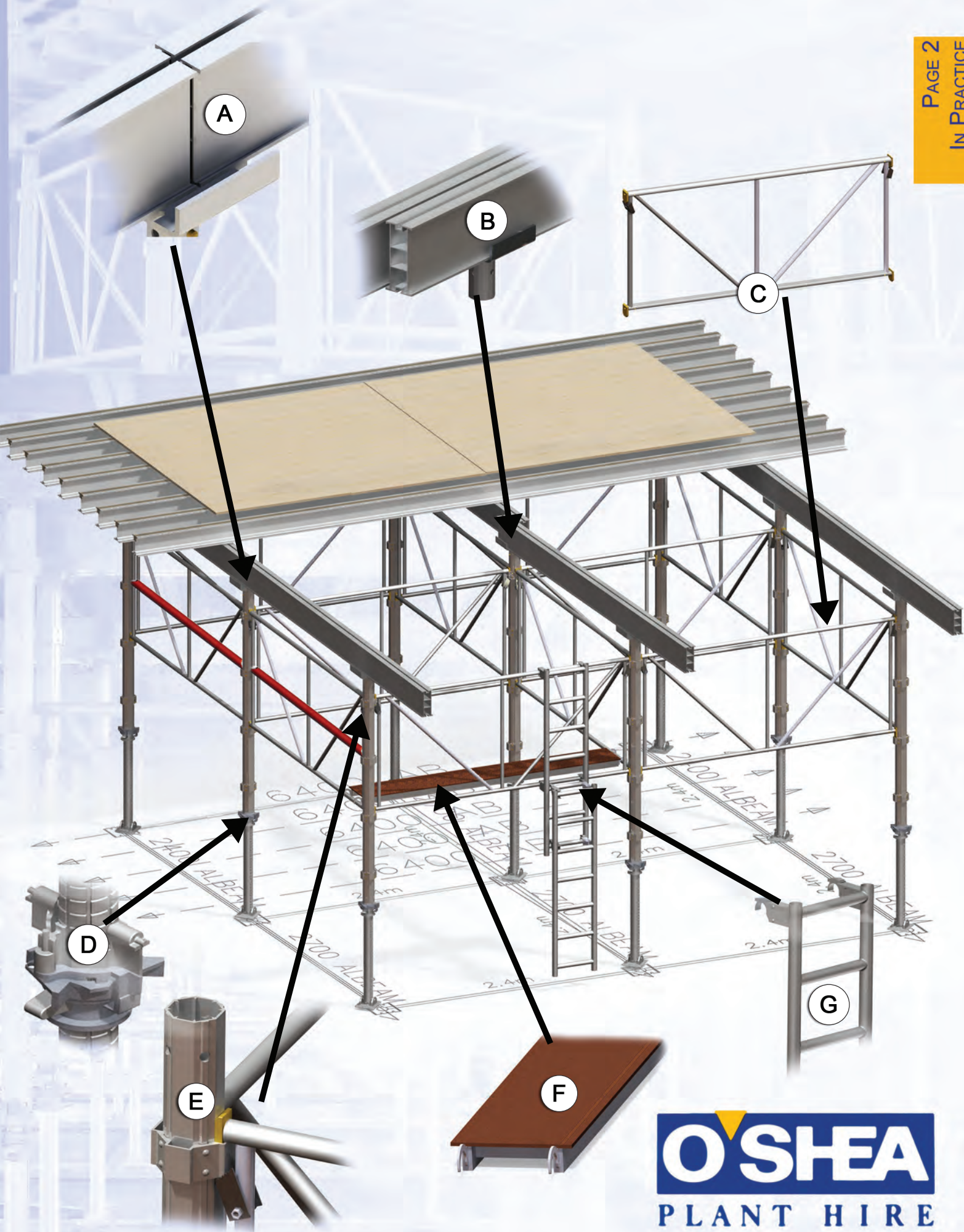
D – With 1250mm of available extension the long jack provides greater flexibility when using the equipment on different floor heights. A unique "quick-strike" mechanism lowers the deck by 12mm with a single hammer blow. A self cleaning thread adjusts the jack 25mm for every turn of the collar, while an integrated tape allows for quick and easy pre-setting of the jack. The long jack gives 10 degree base rotation in one axis and 2 degrees in the other enabling sloping bases/soffits to be accommodated.

E – Fixed pockets at 500mm centres enable fast and accurate positioning of the gates/frames. Simply line up the gate and drop into position. Gate positions are pre-determined, eliminating the need to measure and the fixed pockets mean the gates do not require fixing with nuts and bolts as with other slotted systems.

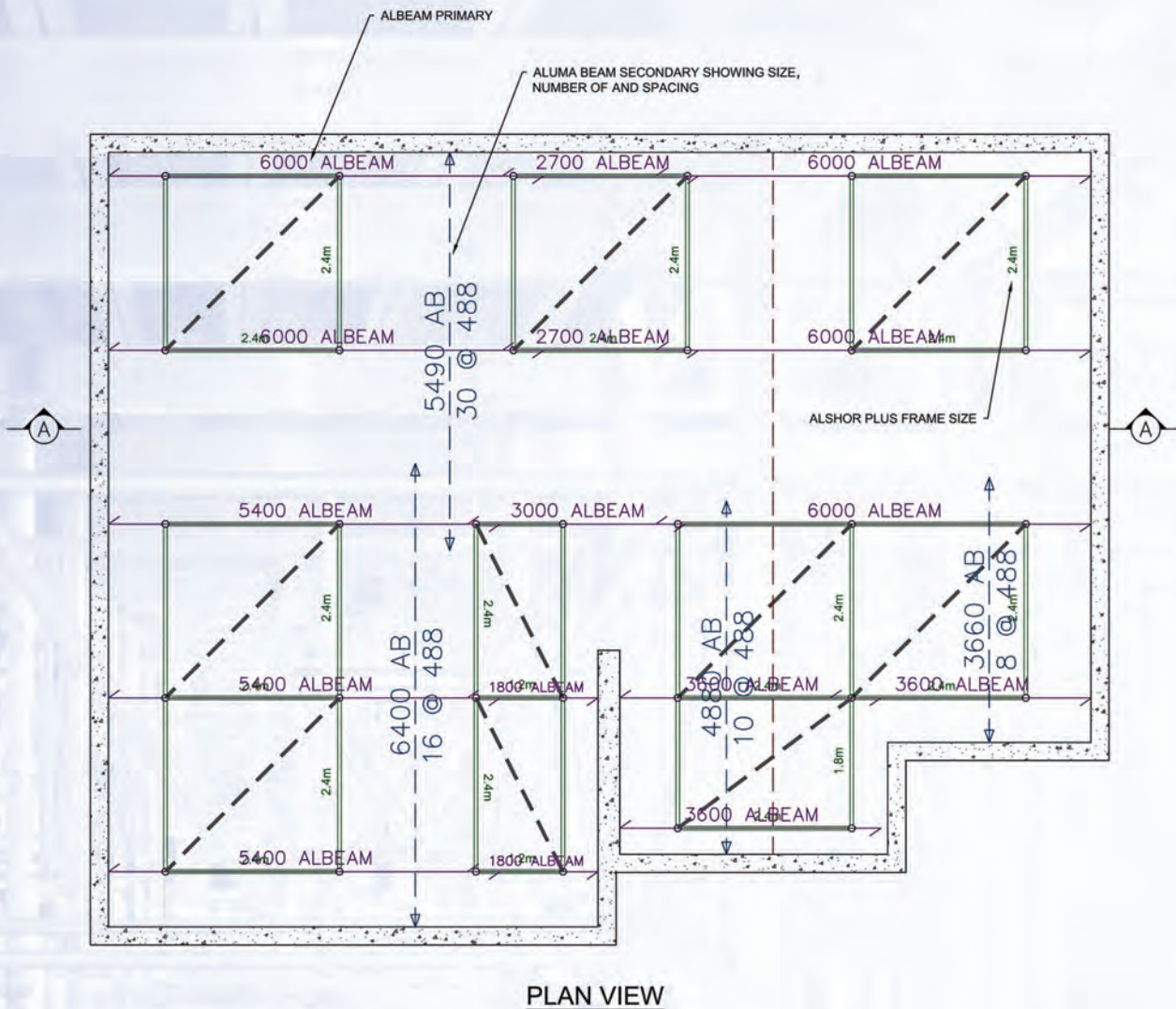
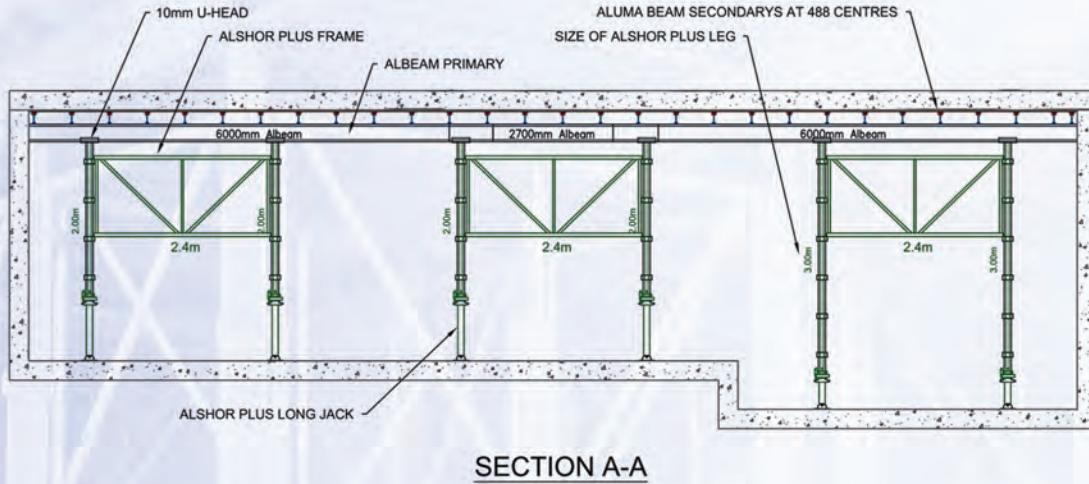
F – Integrated access platforms provide greater on site safety when erecting Alshor Plus compared to other systems. Intermediate board bearers and standard scaffold boards can also be used to provide a safe working platform. Highly visible guardrails accompany the platforms to create an edge protection that can be readily checked from the ground.

G – A dedicated ladder system provides a safe means of accessing the platform level. The ladder system attaches to the bracing frames and can be run internally through the towers.

# IN PRACTICE



# TYPICAL DESIGN



The drawing above shows a typical slab support design.

The benefit of lapping the primary beams can clearly be seen. The high leg load capacity allows for larger grid sizes, reducing erection time, labour and hire costs.

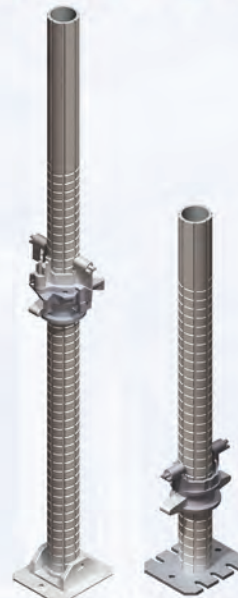
# MAIN COMPONENTS



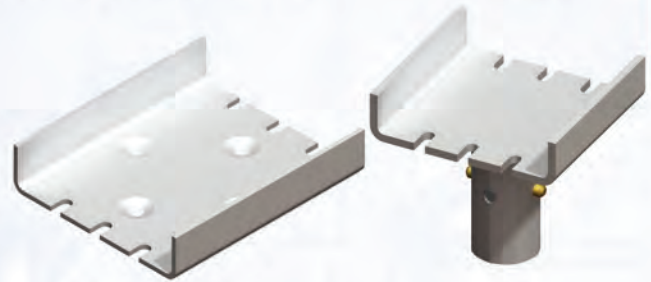
## LEGS

Description	Weight(Kg)	Stock Code
1.25m Legs	5.20	380150
1.50m Legs	7.30	380160
2.00m Legs	9.70	380170
3.00m Legs	14.60	380180
4.00m Legs	19.40	380190

## JACKS



Description	Weight(Kg)	Stock Code
200 - 1250mm (Long)	16.00	380090
120 - 750mm (Short)	11.05	380140



## U-HEAD (6mm/10mm)

Description	Weight(Kg)	Stock Code
240 x 220 x 10mm	4.40	380110
270 x 220 x 6mm	5.00	380130



## BRACING FRAMES/GATES

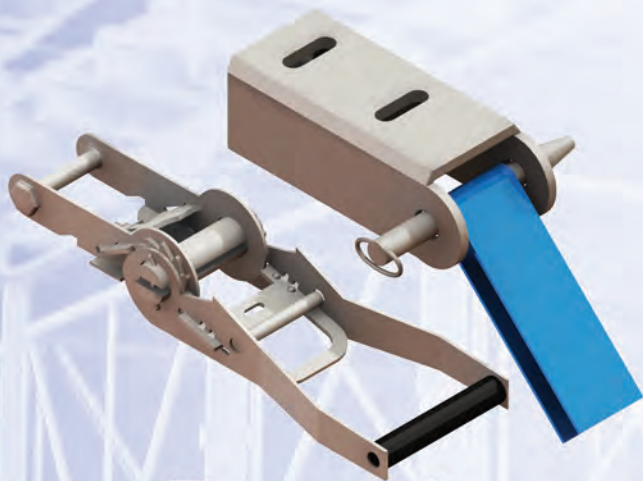
Description	Weight(Kg)	Stock Code
1.20m Frame	6.80	380200
1.80m Frame	10.10	380210
2.40m Frame	12.20	380220
3.00m Frame	14.30	380230



## BASE PLATE

Description	Weight(Kg)	Stock Code
Base Plate	3.40	380080

# ACCESSORIES



## RATCHET LASHING

Description	Weight(Kg)	Stock Code
Ratchet Set - Complete	7.80	380450

Provides horizontal restraint to the falsework where the permanent works cannot.



## JACK SPANNER

Description	Weight(Kg)	Stock Code
Alshor Spanner	2.00	380320

Adjusts the jack, minimising damage to the equipment.

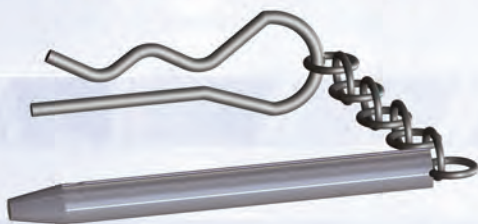


## SPIGOT

Description	Weight(Kg)	Stock Code
6mm Spigot	1.10	380100

Used to locate end to end fixing.

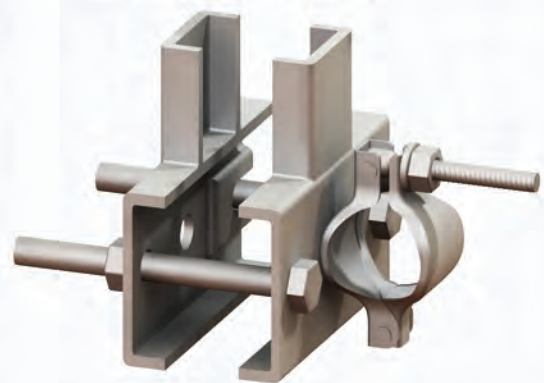
## STRAIGHT PIN



Description	Weight(Kg)	Stock Code
Straight Pin	0.01	380120

Secures components when lifting tables.

## POCKET TUBE COUPLER



Description	Weight(Kg)	Stock Code
Pocket Coupler	2.60	380385

Connects scaffold tube to an Alshor Plus leg.



## M12 UNIFIX NUT & BOLT

Description	Weight(Kg)	Stock Code
M12 Unifix Bolt	0.02	380320
M12 Wing Nut	0.01	380330

Secures Primary Beams to U-Heads.

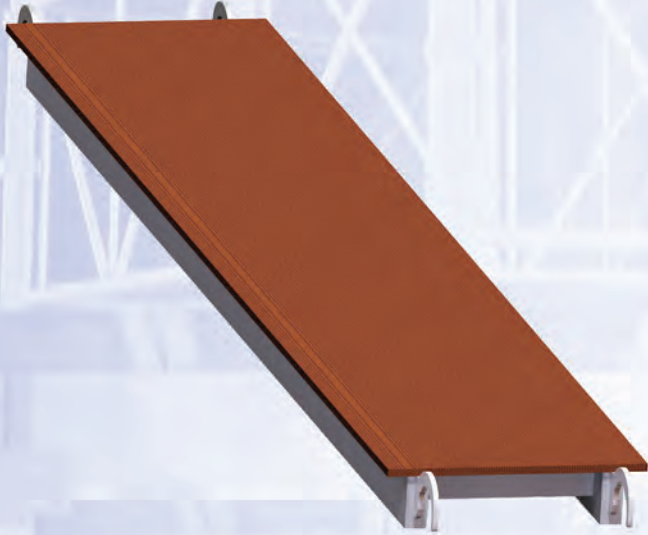
# ACCESS EQUIPMENT



## BOARD BEARER

Description	Weight(Kg)	Stock Code
1.2m Board Bearer	3.90	380240
1.8m Board Bearer	4.90	380250
2.4m Board Bearer	7.50	380260
3.0m Board Bearer	12.00	380270

Board Bearers are located over the top chords of frames enabling the support of scaffold boards at a maximum of 1200mm.



## ACCESS PLATFORM

Description	Weight(Kg)	Stock Code
1800 x 300mm Platform	9.40	380408
2400 x 300mm Platform	12.10	380406
1800 x 600mm Platform	12.80	380400
2400 x 600mm Platform	16.80	380402
1800 x 525mm (Trap)	12.70	380410
2400 x 525mm (Trap)	16.80	380412

Access Platforms are used to create a safe working platform below soffit level.



## LADDER SYSTEM

Description	Weight(Kg)	Stock Code
Starter Ladder	6.00	380466
Bottom Ladder	5.60	380468
1.0m Ladder	4.10	380470
1.5m Ladder	5.50	380472
2.0m Ladder	7.00	380474

Provides access to the working platforms.



## HANDRAILS

Description	Weight(Kg)	Stock Code
1.2m Handrail	3.60	380280
1.8m Handrail	4.50	380290
2.4m Handrail	5.30	380300
3.0m Handrail	6.20	380310

Handrails locate into the lug extrusions with integral spring latches to provide guardrails when access is required below soffit level.



# HANDLING EQUIPMENT



## CASTOR UNIT

Description	Weight(Kg)	Stock Code
Castor Unit	37.50	380350
Castor-Handle	8.50	380370

Transports Alshor Plus tables on a smooth level surface.

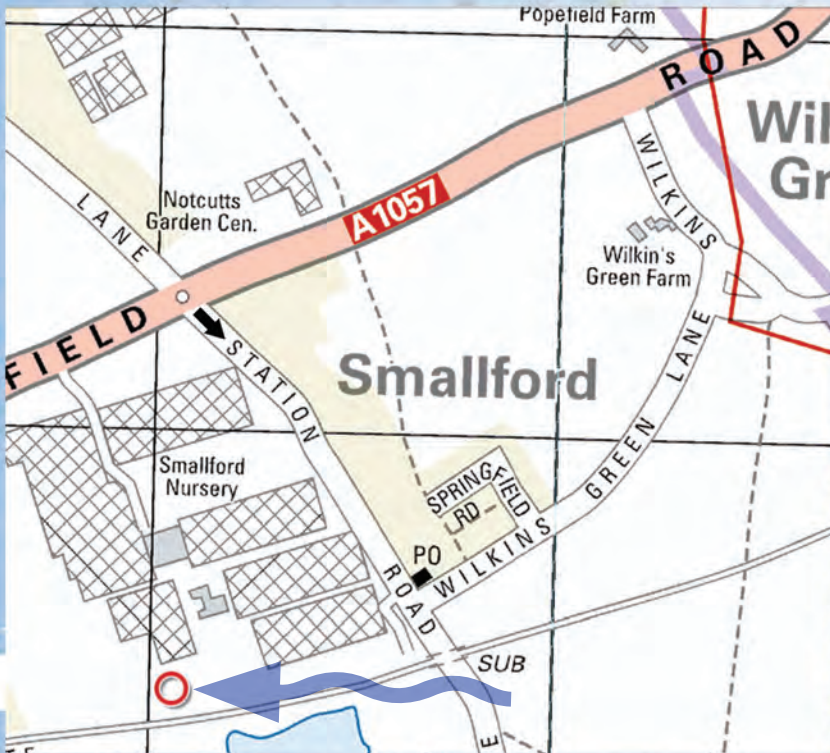


## TROLLEY UNIT

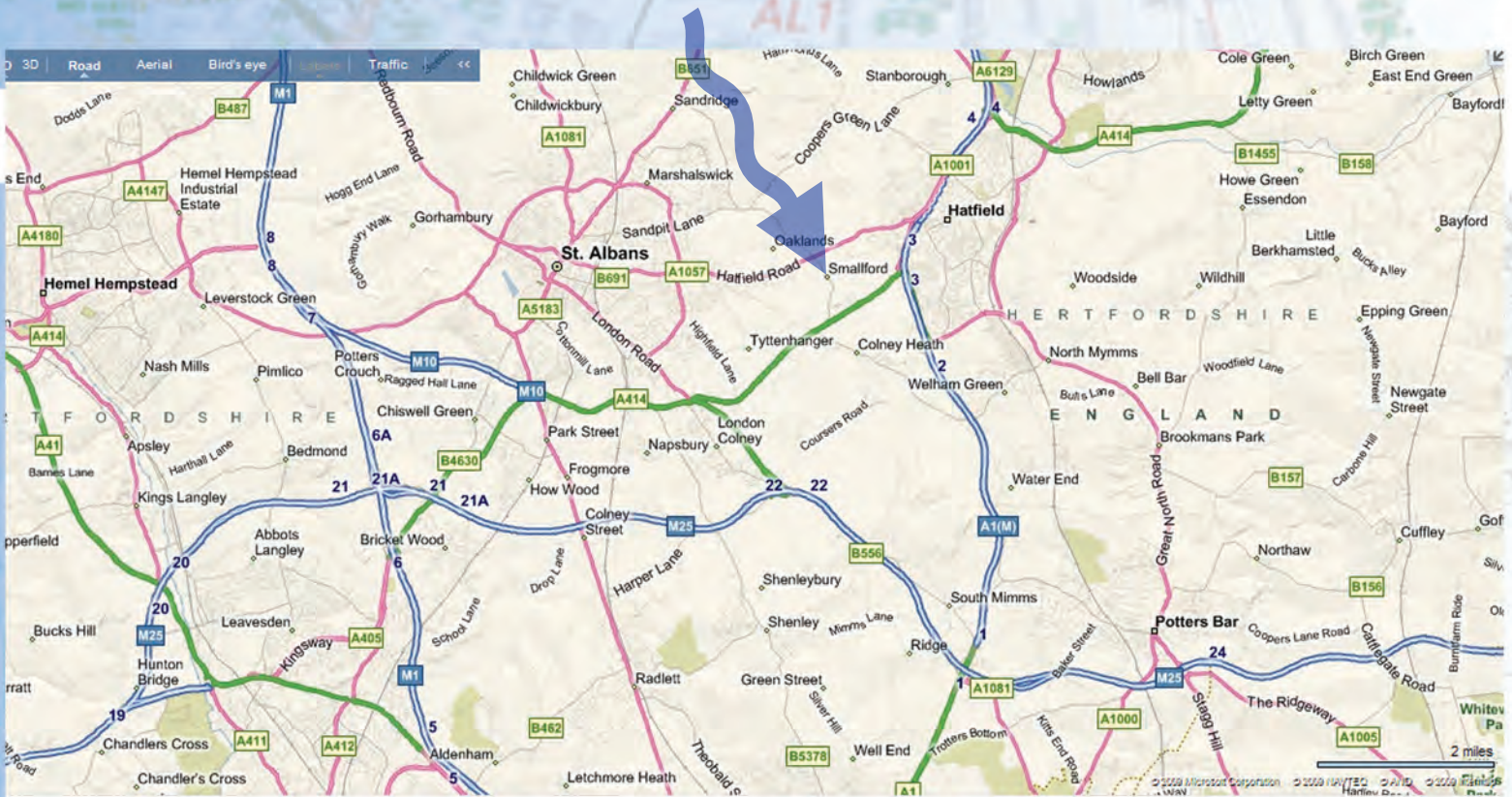
Description	Weight(Kg)	Stock Code
Trolley Unit	86.20	380390

The Trolley Unit engages with the top and bottom chord of the Alshor Plus frames, in order to raise, lower and move tables on a smooth, level surface.

# WHERE ARE WE?



Find us at:  
Station Road  
Smallford  
Nr St Albans  
Hertfordshire  
AL4 0HF



Telephone: 01727 826748

Fax: 01727 826880

<http://www.osheaplanthire.co.uk>