



GASS

O'SHEA

PLANT HIRE

CONTENTS

PAGE No:

INTRODUCTION

The advantages of using the system.

1

IN PRACTICE

An example of GASS falsework once erected.

2

TYPICAL DESIGN

An example of a GASS design.

3

MAIN COMPONENTS

Inner Legs/Jacks

Outer Legs

Ledger Frames

Extensions

Rocking Head

4

ACCESSORIES

Ring Bolts

Spanner

Advanced Guard Rails

Leg Bracing Coupler

5

INTRODUCTION

GASS has been designed and manufactured to meet the speed, safety and economic demands of the modern construction industry.

GASS is safer, stronger and more versatile than any previously available system, yet it still offers competitive economic advantages.

The strength and versatility offered by the GASS system bring the benefits of aluminium shoring to a wider range of construction projects and contractors, many of them producing higher levels of productivity.

A few of these can be summarised below:

- Its lightweight aluminium components enable greater volumes of falsework to be assembled.
- The unique locking feature of the ledger frames is hammer-fastened and simple to locate across various different vertical positions along the legs.
- Its 140kN heavy duty capacity reduces number of components required.
- Each leg has 8 different directions that the frames can be connected.
- Higher shear loading capacity of frames.

Some of the GASS systems key points can be seen on the adjacent page.

A - Interlocking head plates eliminate eccentricity.

B - 8 Point profile on the leg allows versatility for attachment of ledger frames in multiple directions.

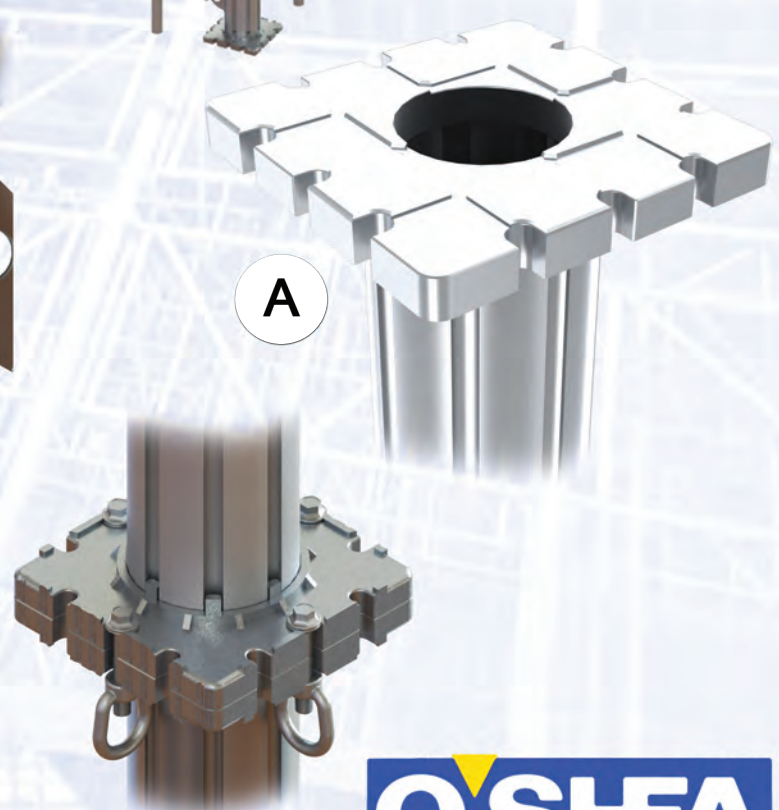
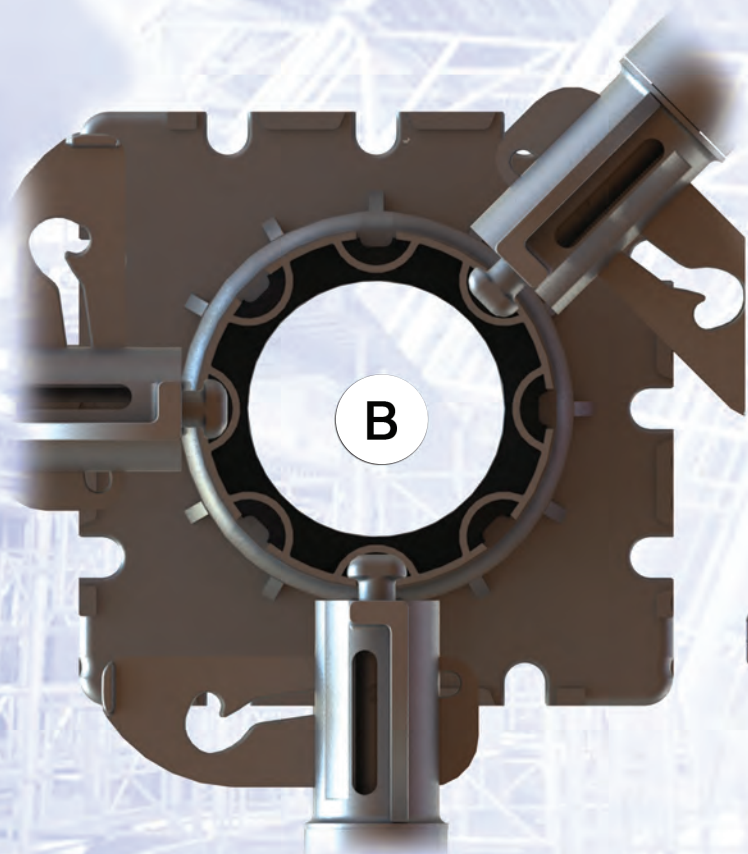
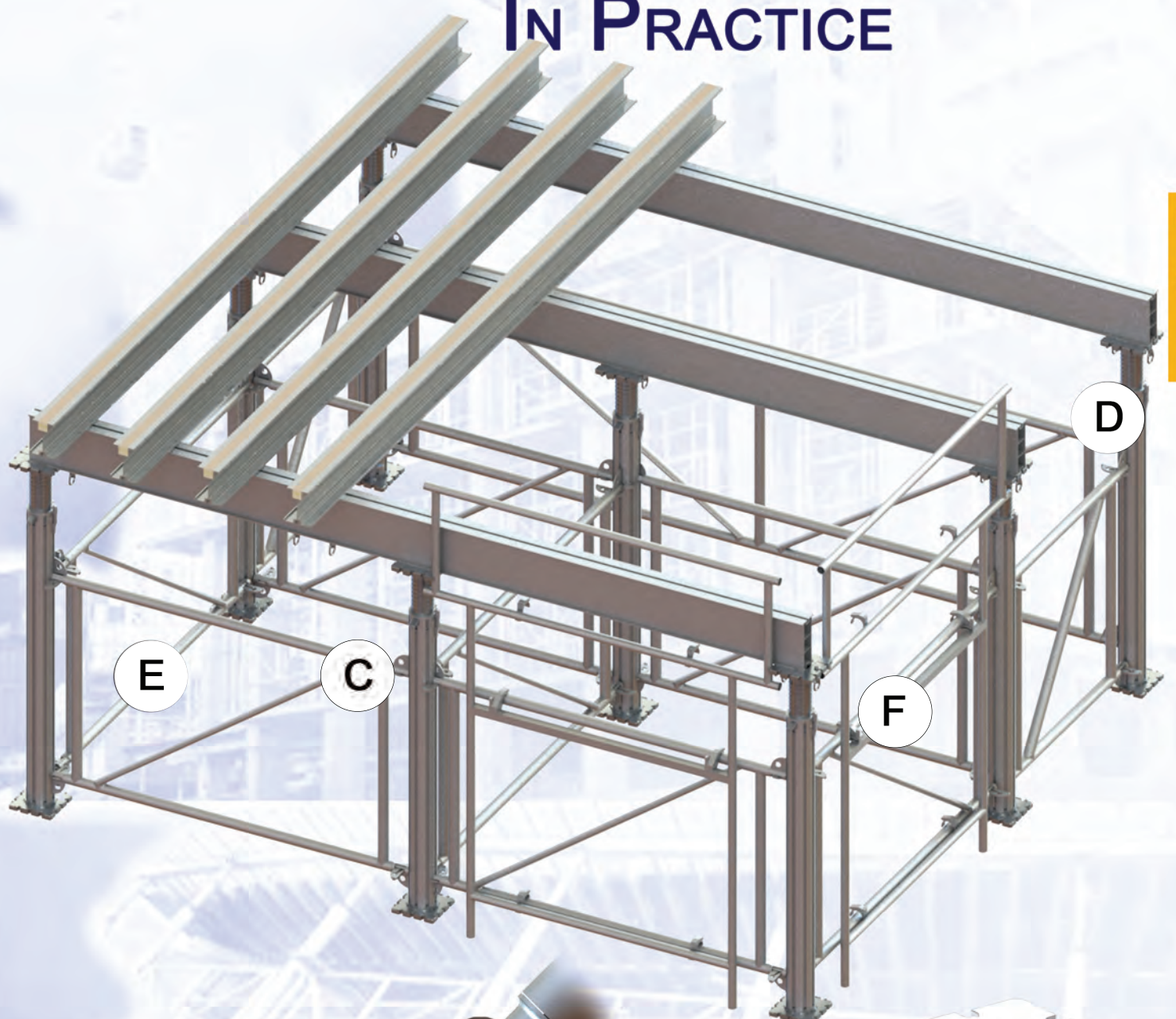
C - A clearly visible wedge connection results in easy identification of correctly installed frames.

D - The standard jack length provides up to 1314mm of extension. A removeable grub screw prevents over extension.

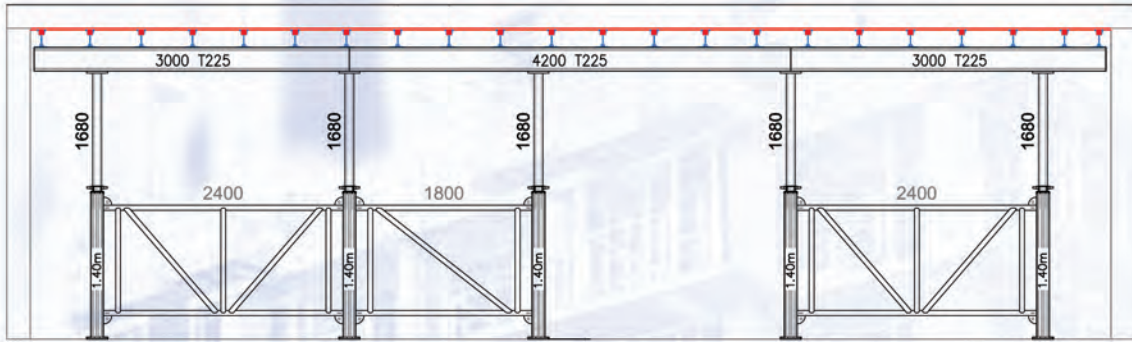
E - Ledger frames are available in four sizes; 1.2m, 1.8m, 2.4m and 3.0m. This offers the user versatility with a minimum number of components.

F - Advanced Guard Rails can be attached to regular ledger frames and can be used in conjunction with platforms to provide a limited amount of edge protection.

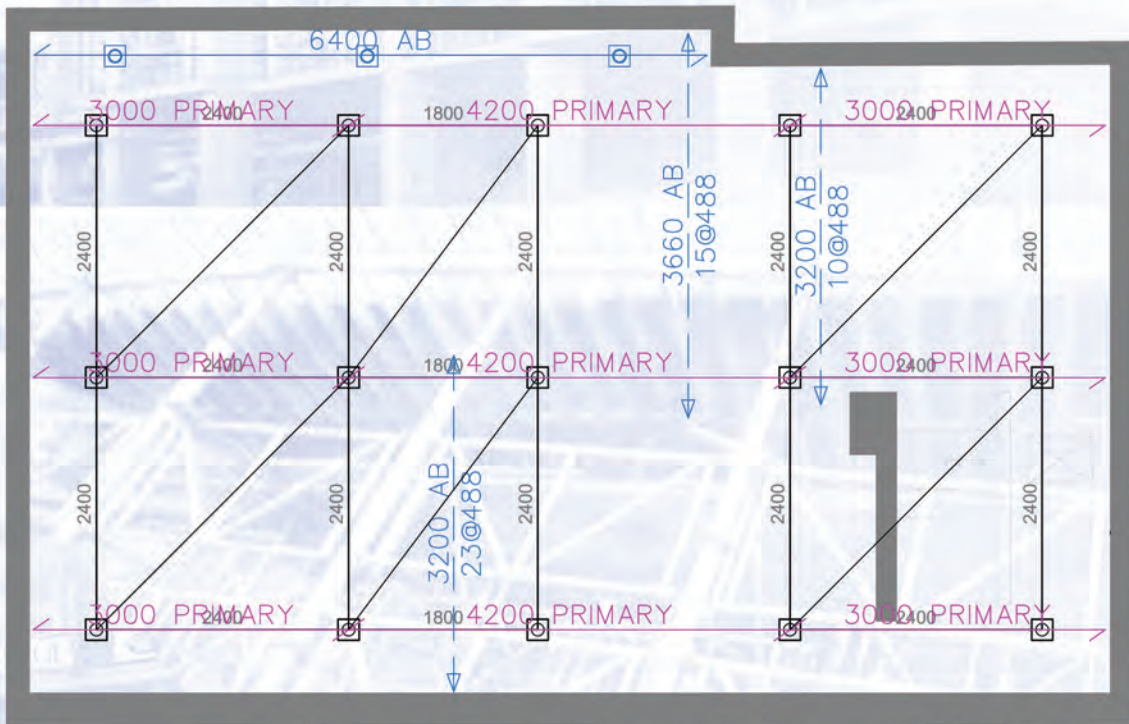
IN PRACTICE



TYPICAL DESIGN



SECTION A - A

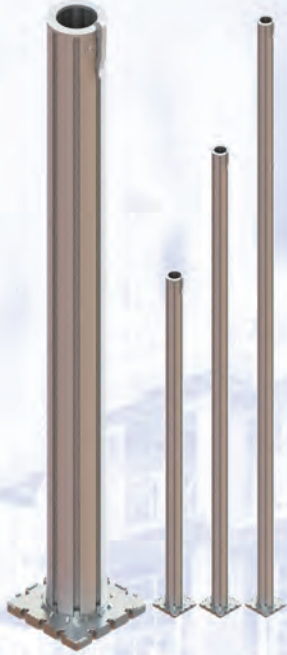


PLAN LAYOUT

The drawing above shows an example of a slab support design.

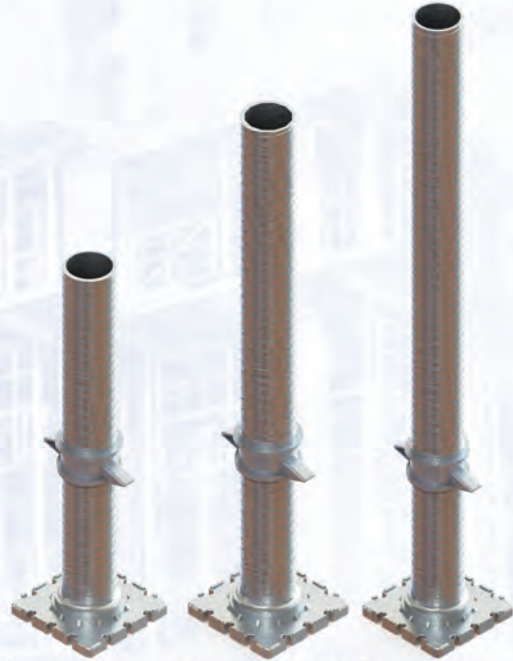
The GASS system keeps the equipment required to a minimum. Given the capacity of each leg as well, this means that designs can be accomplished with a minimal amount of legs as well as very large spans on the frames, overall reducing the amount of equipment on site and saving on cost.

MAIN COMPONENTS



OUTER LEGS

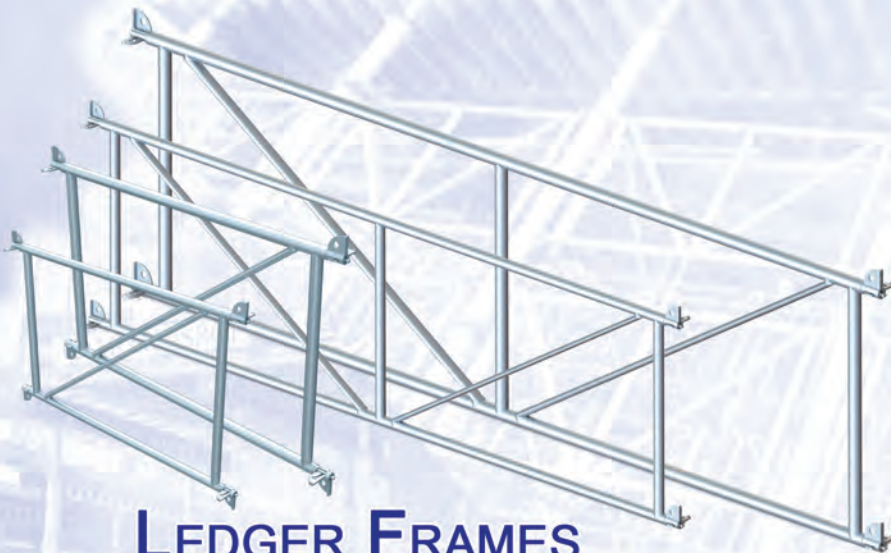
Description	Weight(Kg)	Stock Code
Outer Leg - 1.4m	8.04	290010
Outer Leg - 2.49m	12.73	290020
Outer Leg - 3.58m	17.41	290030
Outer Leg - 4.67m	22.10	290040



INNER LEGS/JACKS

Description	Weight(Kg)	Stock Code
Inner Leg - 0.78m	5.50	290050
Inner Leg - 1.4m	8.70	290060
Inner Leg - 1.68m	10.20	290070

PAGE 4
COMPONENTS



LEDGER FRAMES

Description	Weight(Kg)	Stock Code
Ledger Frame 1.2m	9.40	290100
Ledger Frame 1.8m	10.30	290110
Ledger Frame 2.4m	13.40	290120
Ledger Frame 3.0m	15.80	290130



GASS EXTENSION

Description	Weight(Kg)	Stock Code
500mm Extension	5.8	290262

Where very high shoring is required, the extension leg allows multiple leg build-up.

ACCESSORIES



RING BOLTS

Description	Weight(Kg)	Stock Code
Head to Head	0.60	290240
Head to Beam	0.40	290266

A single assembly ring nut for connecting inner/outer legs to primary beams (right picture). Alternatively, connecting legs or extensions to each other (left picture). Insert with one hand, do up with podger.



LEG BRACING COUPLER

Description	Weight(Kg)	Stock Code
Bracing Coupler	1.20	290200

Connects into the channel on an outer leg to allow scaffold tube to be used in any direction.



JACK SPANNER

Description	Weight(Kg)	Stock Code
Spanner	6.40	290250

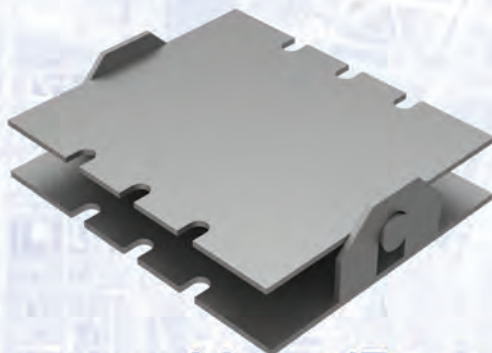
Locks around the collar of Inner legs/jacks while under load and allows ease of striking. Also promotes a safe and controlled release.



ADVANCED GUARD RAIL

Description	Weight(Kg)	Stock Code
Guardrail Wide	32.00	290268
Guardrail Narrow	26.00	290270

Can be attached to ledger frames to act as a guardrail when using access platforms.

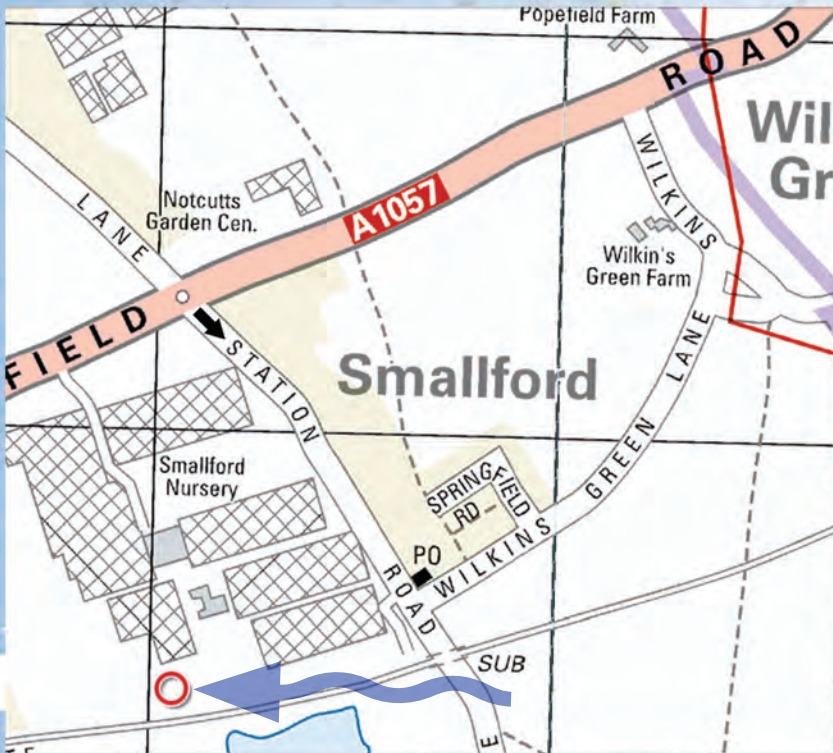


ROCKING HEAD/BASE

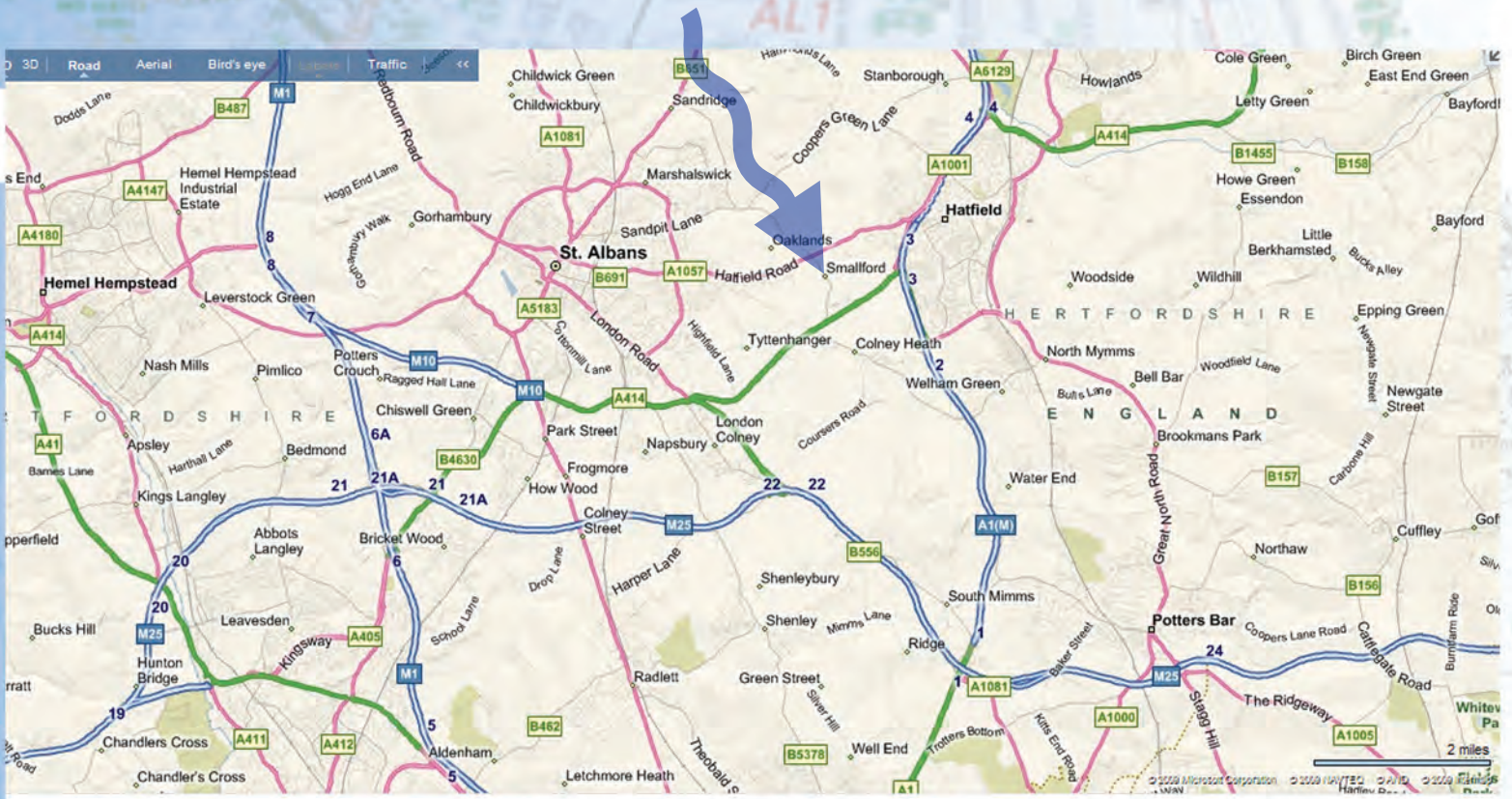
Description	Weight(Kg)	Stock Code
Rocking Head/Base	8.25	290220

Can be attached to a beam or outer leg to allow use on a sloping soffit up to 15 degrees.

WHERE ARE WE?



Find us at:
Station Road
Smallford
Nr St Albans
Hertfordshire
AL4 0HF



Telephone: 01727 826748

Fax: 01727 826880

Terms and Conditions

Any unauthorised copying, disclosure or distribution of this brochure or any of its contents is strictly prohibited. The information and details contained within this brochure remains the sole property CJ O'Shea (Plant Hire) Ltd and/or any relevant external sources and is not to be altered or reproduced without prior permission. CJ O'Shea (Plant Hire) Ltd reserves the right to change any information contained within this brochure without giving prior notice.

Disclaimer

The pictures, diagrams and examples used in the booklet are purely for illustration. They are for demonstration only and must not be used for any other purpose.

All information is correct at time of printing and in accordance with manufacturer's technical data.