

**O'SHEA**  
PLANT HIRE

**SUPERSLIM SOLDIER**

# CONTENTS

## PAGE No:

### **INTRODUCTION**

The advantages of using the system.

1

### **IN PRACTICE**

An example of the superslim soldier system once erected.

2

### **TYPICAL DESIGNS**

Examples of superslim soldier designs.

3

### **COMPONENTS**

Superslim Soldier

Corner Pivot

Lifting Plate

Access Bracket

Turnbuckle and Plumbing Foot

4

Spade End Link

Prop Pivot Tube

Prop Jacks L/H and R/H

Tilt Plate

Prop Corner Angle

Joint Stiffeners

5

Support Plate

Anchor Plate

Slimshor Tube Clamp

Six-Way Connector

6

Porthole Bearing

Universal Clamp

Adjustable Base

Heavy Duty Prop Connector

Pivot Cleat Set

7

# INTRODUCTION

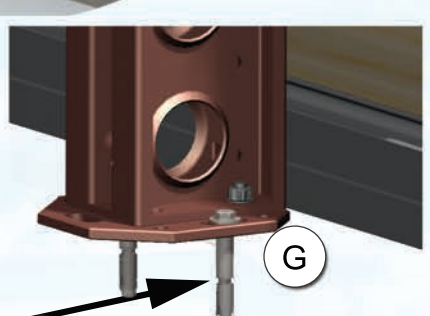
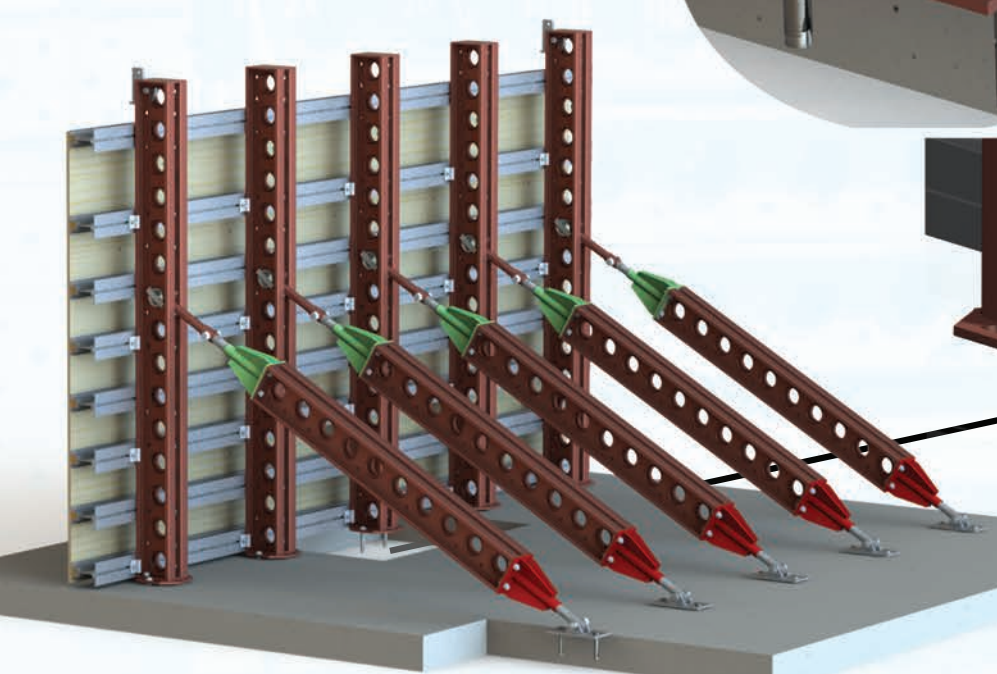
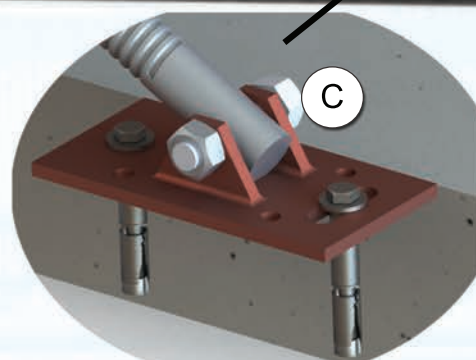
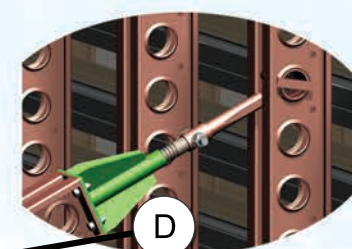
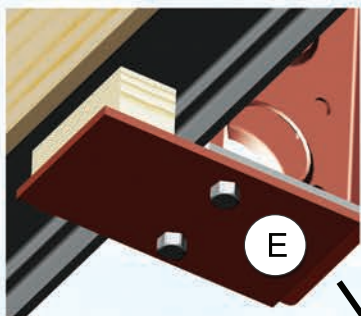
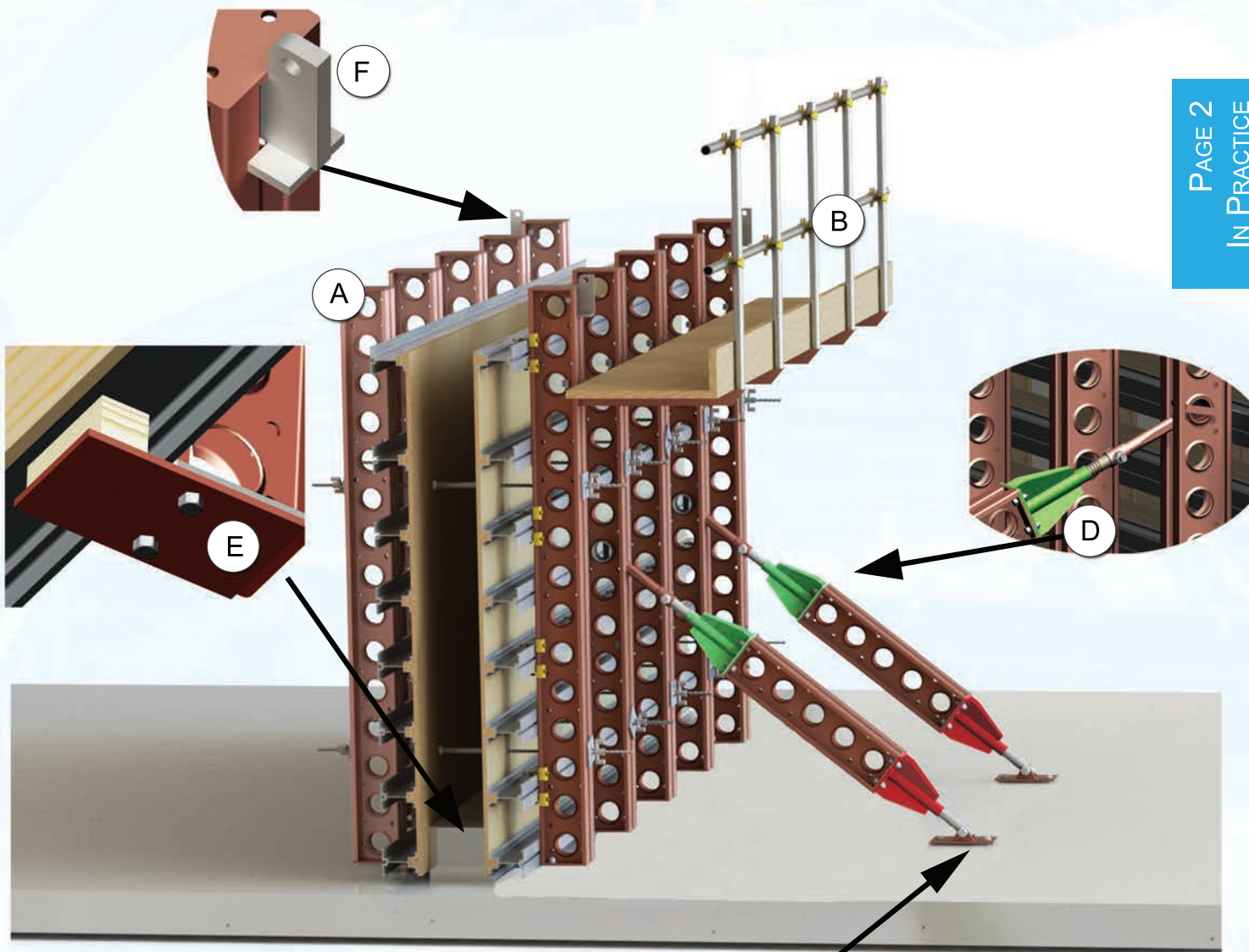
The Superslim Soldier is the definitive formwork primary beam, with its unrivalled strength-to-weight ratio, versatility and range of accessories. Robust and easily assembled into almost any length, the Superslim Soldier can be re-used on site after site, without modification, for virtually any formwork or other temporary works.

Available with a comprehensive range of accessories, the Superslim Soldier can be assembled into:

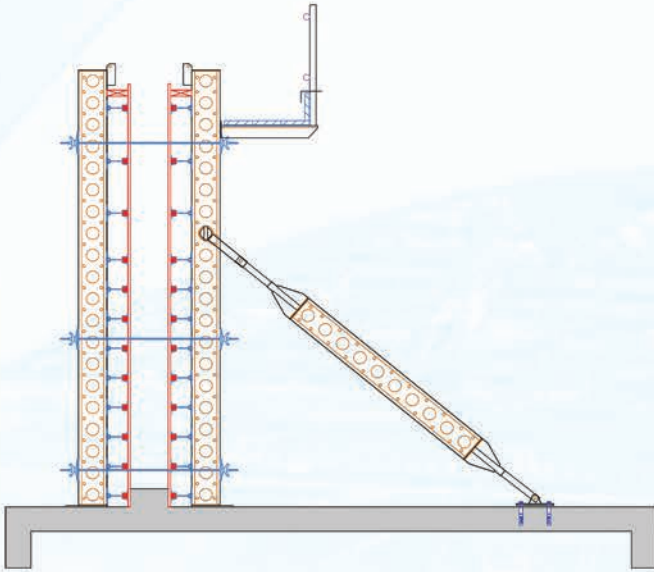
- Wall formwork panels
- Vertical and raking shores
- Spanning beams
- Spanning trusses
- Façade retention
- Support for temporary site offices

- A - The standard Superslim soldier is the integral part of the system, available in eight standard lengths ranging from 90mm to 3600mm. This range of sizes provides almost unlimited scope for assembly into different combinations to reach a target size.
- B - Access brackets are attached to soldiers and combined with scaffold tubes and scaffold boards to provide a safe access platform for concrete pours.
- C - The tilt plate enables a push/pull prop to be connected to a plane surface at any angle.
- D - The prop jacks are used in pairs to provide length adjustment to soldiers in push/pull scenarios.
- E - Aluminium or timber beams can be used as horizontal walers in wall formwork applications. The support plate is used to support the form face from the base of the Soldiers. A timber packer is typically required under the first horizontal waler.
- F - The lifting plate is used in pairs for lifting formwork shutters.
- G - Anchor bolts and plates secure the base of the soldier to a floor or wall.

# IN PRACTICE



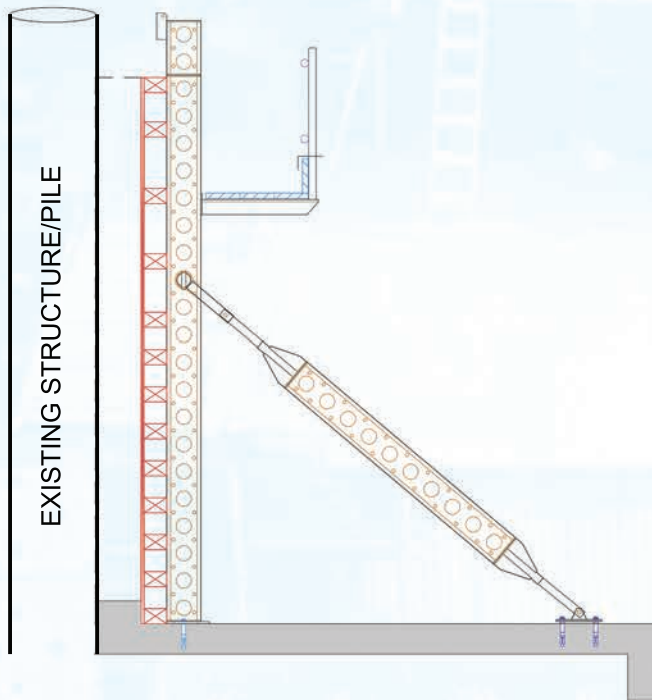
# TYPICAL DESIGNS



## TRADITIONAL FORMWORK

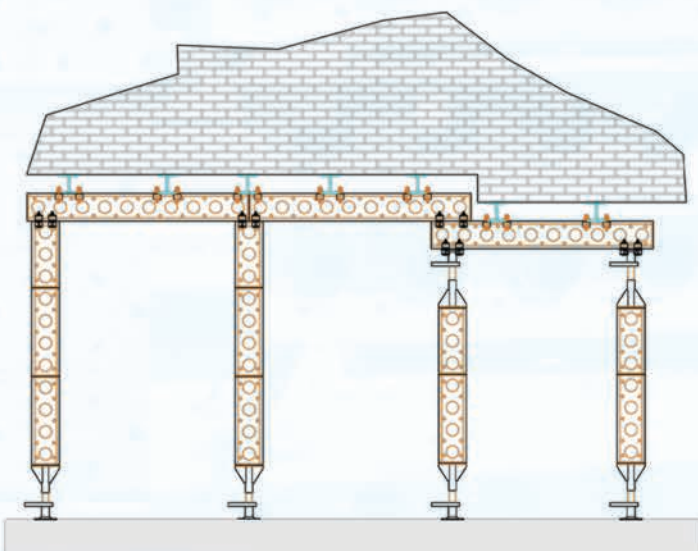
Soldiers can be used together with Aluma beams or timber walers to form wall formwork.

Additional soldiers can be attached as push pull props for alignment purposes. Access brackets are also available to create a safe pouring platform.



## SINGLE SIDED WALL

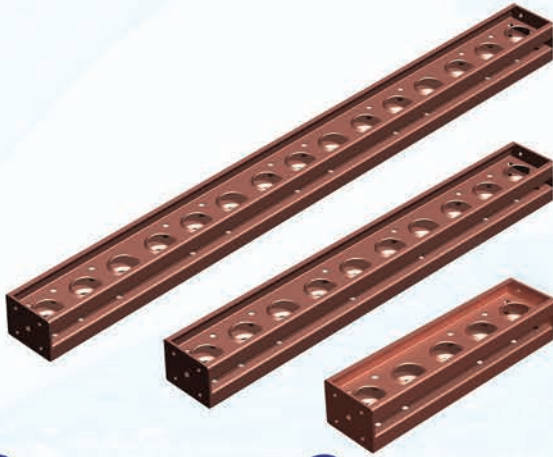
Soldiers can also be used to form single sided walls. The raking props joined to the vertical soldiers together with anchor plates and anchor bolts provide restraint in this application.



## NEEDLING

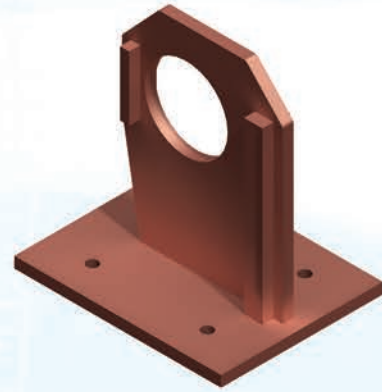
Soldiers can also be used in needling applications. Soldiers are positioned in such a way as to allow for works to proceed freely.

# COMPONENTS



## SUPERSLIM SOLDIER

Description	Weight(Kg)	Stock Code
0.09m Packer	6.50	175406
0.36m Soldier	8.50	175409
0.54m Soldier	12.50	175407
0.72m Soldier	17.80	175408
0.90m Soldier	20.08	171744
1.80m Soldier	41.60	171746
2.70m Soldier	56.60	171737
3.60m Soldier	71.01	171738



## CORNER PIVOT

Description	Weight(Kg)	Stock Code
Corner Pivot	2.10	175411

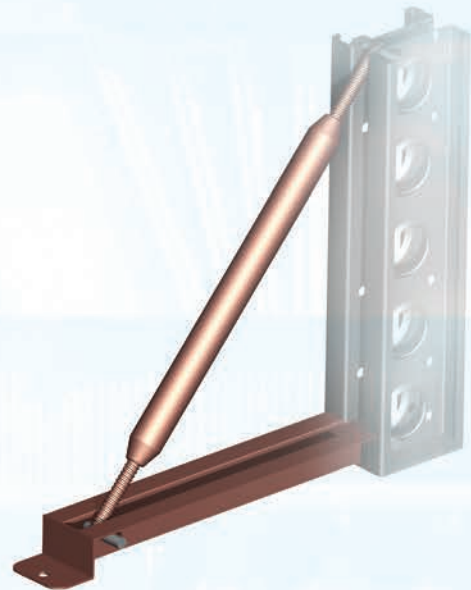
Connects soldiers and allows 15 degrees of rotation.



## LIFTING PLATE

Description	Weight(Kg)	Stock Code
Lifting Plate	2.95	171707

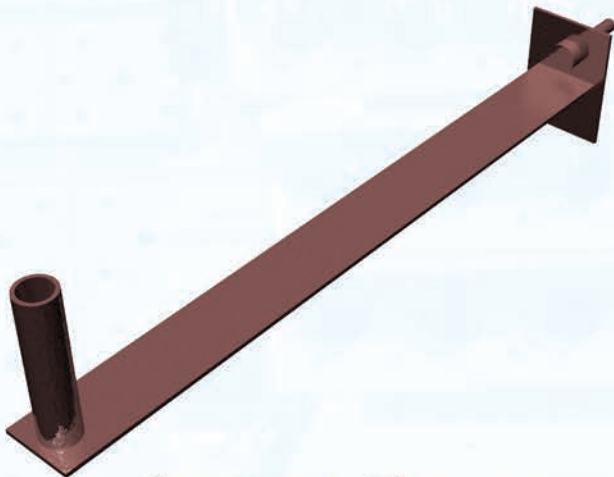
Used in pairs to lift formwork.



## TURNBUCKLE & PLUMBING FOOT

Description	Weight(Kg)	Stock Code
Turnbuckle	8.25	171705
Plumbing Foot	10.75	171706

Used to support single sided formwork for bases.



## ACCESS BRACKET

Description	Weight(Kg)	Stock Code
Access Bracket	6.75	171704

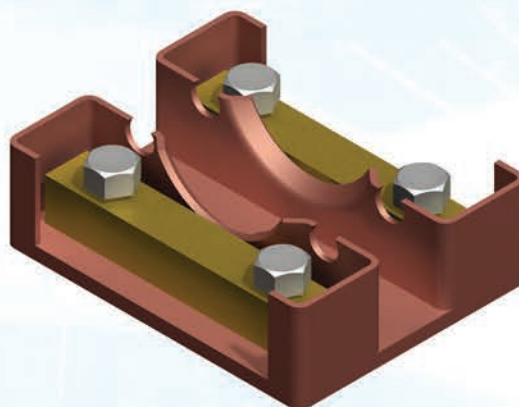
Used with scaffold boards, tube and fitting to provide a safe working platform.



## SPADE END LINK

Description	Weight(Kg)	Stock Code
Spade End Link	4.20	171720

When combined with the prop pivot tube, connects a heavy duty push/pull prop to the porthole of another soldier.



## JOINT STIFFENERS

Description	Weight(Kg)	Stock Code
Joint Stiffeners	5.00	172308

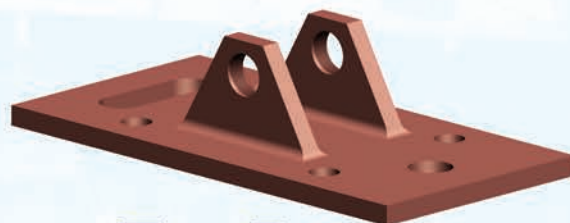
Increases the tension and bending capabilities of a joint between superslim soldiers.



## PROP JACKS LH/RH

Description	Weight(Kg)	Stock Code
Left Hand Jack	12.40	171719
Right Hand Jack	12.40	171718

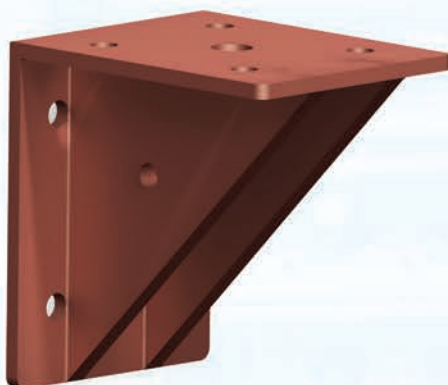
Converts soldiers into heavy duty push/pull props.



## TILT PLATE

Description	Weight(Kg)	Stock Code
Tilt Plate	5.00	171721

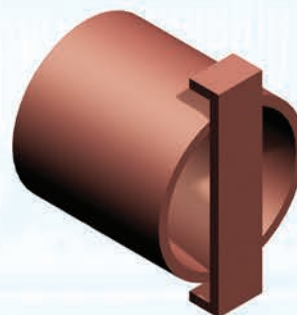
Connects heavy duty push/pull props to a surface.



## PROP CORNER ANGLE

Description	Weight(Kg)	Stock Code
Prop Corner Angle	8.00	175413

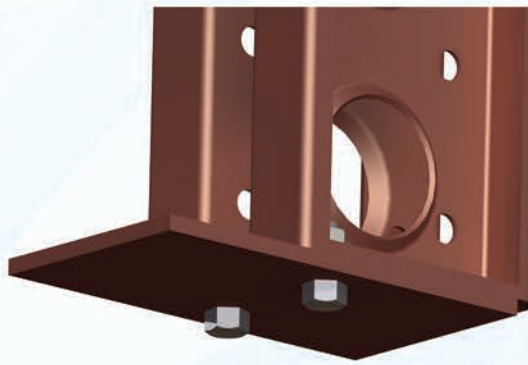
Allows connection of two soldiers at right angles, and/or the connection of a heavy duty push/pull prop.



## PROP PIVOT TUBE

Description	Weight(Kg)	Stock Code
Prop Pivot Tube	2.10	171717

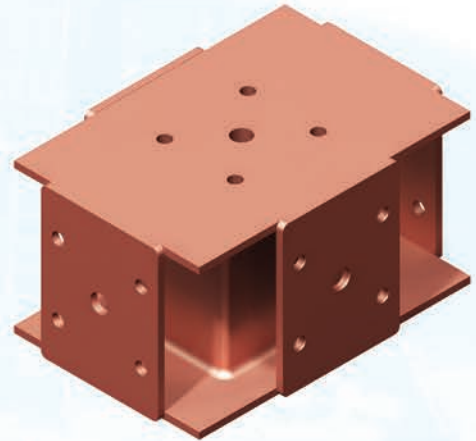
When combined with the spade end link, connects a heavy duty push/pull prop to the porthole of another soldier.



## SUPPORT PLATE

Description	Weight(Kg)	Stock Code
Support Plate	5.42	171747

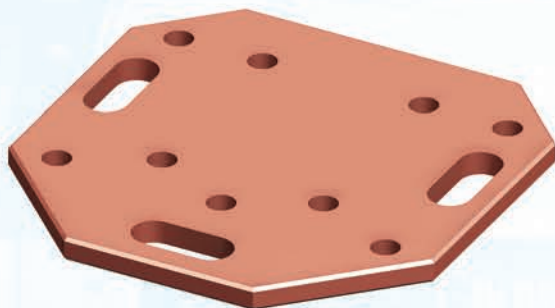
Supports plywood and backing members in formwork applications.



## SIX-WAY CONNECTOR

Description	Weight(Kg)	Stock Code
Adjustable Base	16.17	171755

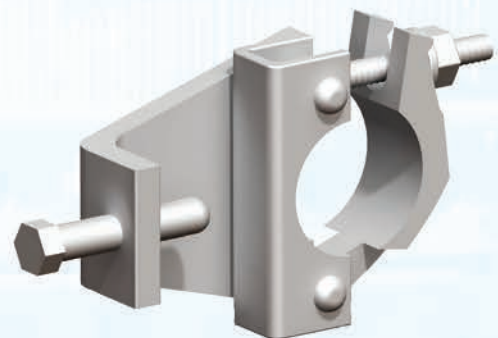
A node to connect six or eight soldiers at right angles.



## ANCHOR PLATE

Description	Weight(Kg)	Stock Code
Anchor Plate	6.50	171722

Anchor Plates secure the end of a soldier to a floor or wall.

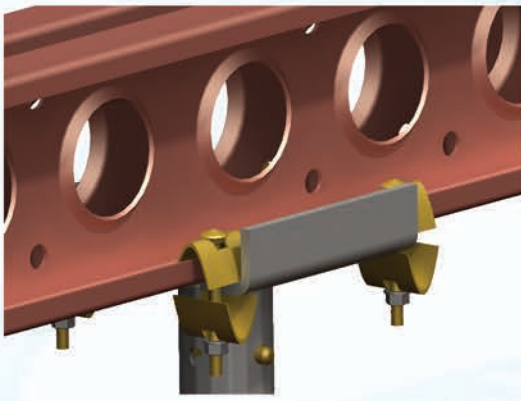


## SLIMSHOR TUBE CLAMP

Description	Weight(Kg)	Stock Code
Girder Coupler	0.75	175405

Connects scaffold lacing tubes to soldiers.

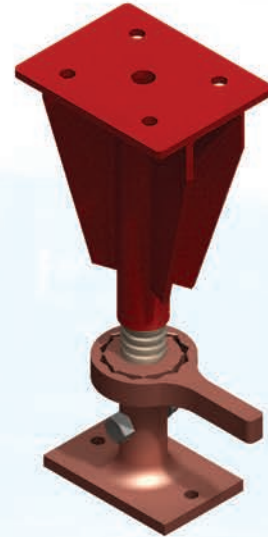




## UNIVERSAL CLAMP

Description	Weight(Kg)	Stock Code
Universal Clamp	0.20	175404

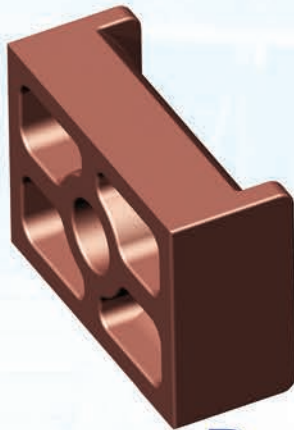
A light duty clamp with many uses, such as connecting aluminium beams as walers and soldier headbeans to uheads.



## ADJUSTABLE BASE

Description	Weight(Kg)	Stock Code
Adjustable Base	16.17	175414

Spreads and transfers loads from superslim soldier props where length adjustment is necessary.



## PORTHOLE BEARING

Description	Weight(Kg)	Stock Code
Porthole Bearing	2.00	175261

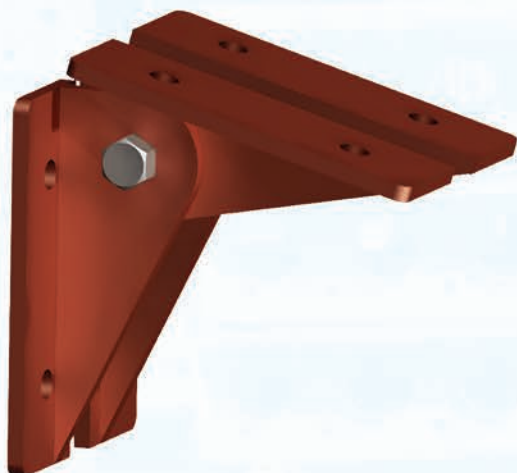
Connects a diagonal tie into the porthole of a soldier.



## HEAVY DUTY PROP CONNECTOR

Description	Weight(Kg)	Stock Code
H.D Prop Connector	12.36	171768

Used to connect push pull props to soldiers where a load transfer of more than 65kN is required.



## PIVOT CLEAT SET

Description	Weight(Kg)	Stock Code
Pivot Cleat Set	8.90	172349

Connects soldiers end-to-end and allows 15 degrees of rotation.